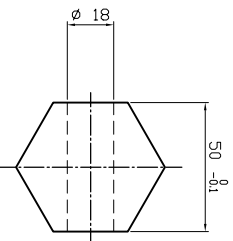


OUTPUT SHAFT



TECHNICAL DATA

DESCRIPTION: PG 161 PE 4.28 12012	
PLANETARY GEARBOX	BRAKE
RATIO I = 4.28	TYPE BRAKING TORQUE Min.
CONT TORQUE 170 daNm	RELEASE PRESSURE Min.
MAX TORQUE 340 daNm	MAX PRESSURE
INPUT SPEED max 2800 rpm	LUBRICANT
LUBRICANT ISD 3448	OIL QUANTITY
OIL QUANTITY 15 l	TYPE PART. N.
	DESCRIPTION 12012
	40X36 25-CH.8 2M12
	MOTOR

PAINT COLOR	CUSTOMER
WEIGHT 30 Kg	MOUNTING POSITION V1
PART. N.	

☐ BREATHER PLUG	☑ DRAIN PLUG
☑ FILLING PLUG	☑ ELBOW
☐ LEVEL PLUG	☐ EXTENSION

Hauimed S.r.l. - Via Nicola Sacco, 12 - 47122 Forlì (FC) ITALY - Tel. +39 0543 779518

**hauimed**  
mechanics on demand

DATE	
SGN.	
N.DIS	